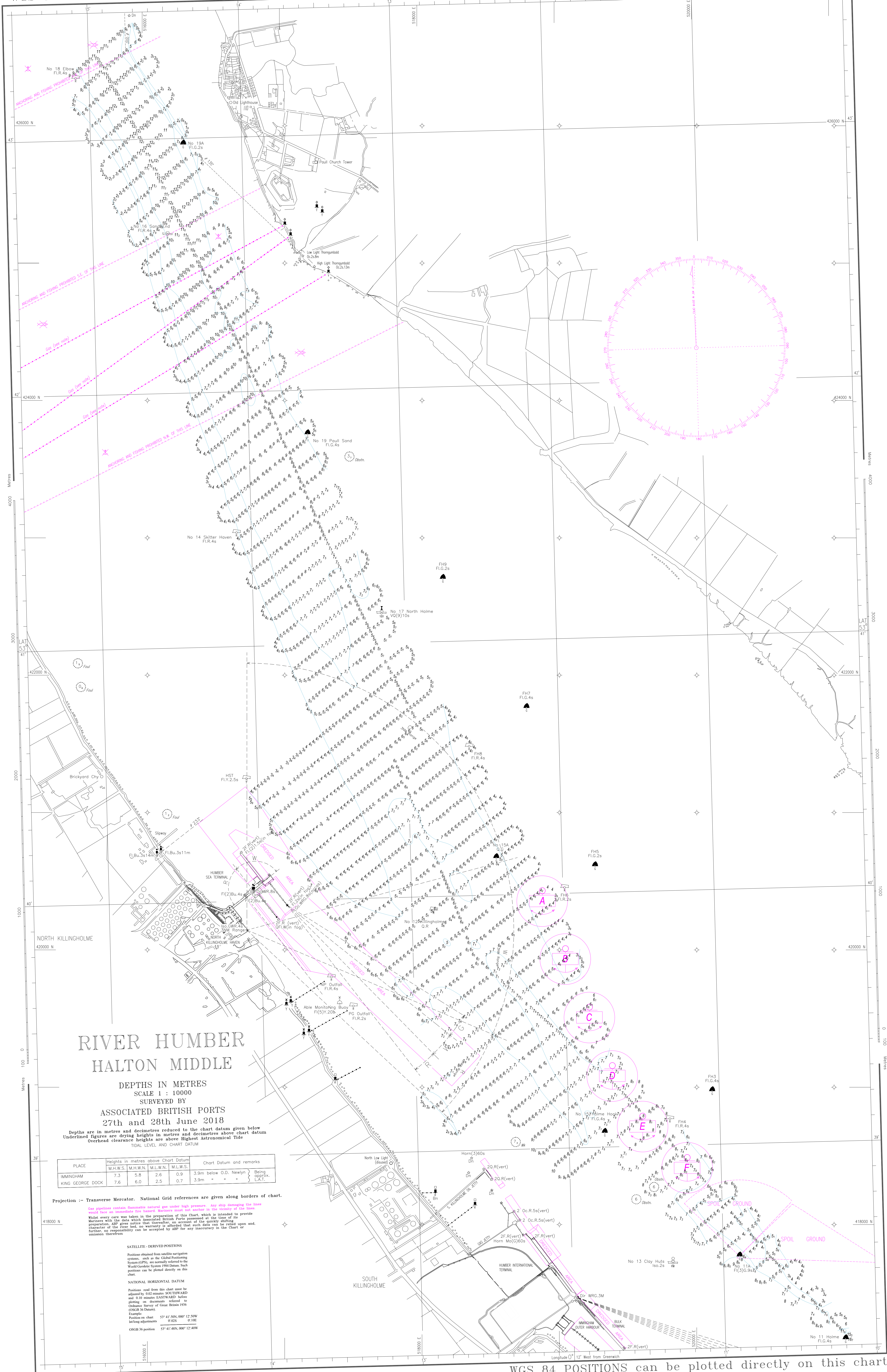


WGS 84 POSITIONS can be plotted directly on this chart

© Copyright 2018. All rights reserved. No part of this product may be reproduced in any form (including photocopying or by electronic means) without prior permission.



RIVER HUMBER HALTON MIDDLE

DEPTHS IN METRES
SCALE 1 : 10000

SURVEYED BY
ASSOCIATED BRITISH PORTS
27th and 28th June 2018

Depths are in metres and decimetres reduced to the chart datum given below
Underlined figures are drying heights in metres and decimetres above chart datum
Overhead clearance heights are above Highest Astronomical Tide
TIDAL LEVEL AND CHART DATUM

PLACE	Heights in metres above Chart Datum				Chart Datum and remarks
	M.H.W.S.	M.H.W.N.	M.L.W.N.	M.L.W.S.	
IMMINGHAM	7.3	5.8	2.6	0.9	3.9m below O.D. Newlyn } Being approx. L.S.T.
KING GEORGE DOCK	7.6	6.0	2.5	0.7	

Projection -- Transverse Mercator. National Grid references are given along borders of chart.

Gas pipelines contain flammable and/or toxic gas pressure. Do not damage the lines except from an immediate fire hazard. Mariners must not anchor in the vicinity of the lines. Mariners will give notice that they are in the vicinity of the lines by the use of the appropriate sound signal. British Ports powered at the time of its preparation. It is not intended that this chart be used for any purpose other than navigation. The chart is not a warranty of the accuracy of the data. The chart is not a warranty of the accuracy of the data. The chart is not a warranty of the accuracy of the data.

SATELLITE-DERIVED POSITIONS
Positions obtained from satellite navigation systems, such as the Global Positioning System (GPS), are normally referred to the World Geodetic System 1984 Datum. Such positions can be plotted directly on this chart.

NATIONAL HORIZONTAL DATUM
Positions read from this chart must be adjusted by 802 metres SOUTHWARD and 0.10 metres EASTWARD before plotting on documents referred to Induction Survey of Great Britain 1956 (OSGB 36 Datum).
Example:
Position on chart 53° 41' 50.00" 12° 50' 00.00"
In long adjustment 0' 02.00" 0' 10.00"
OSGB 36 position 53° 41' 48.00" 12° 49' 50.00"

WGS 84 POSITIONS can be plotted directly on this chart